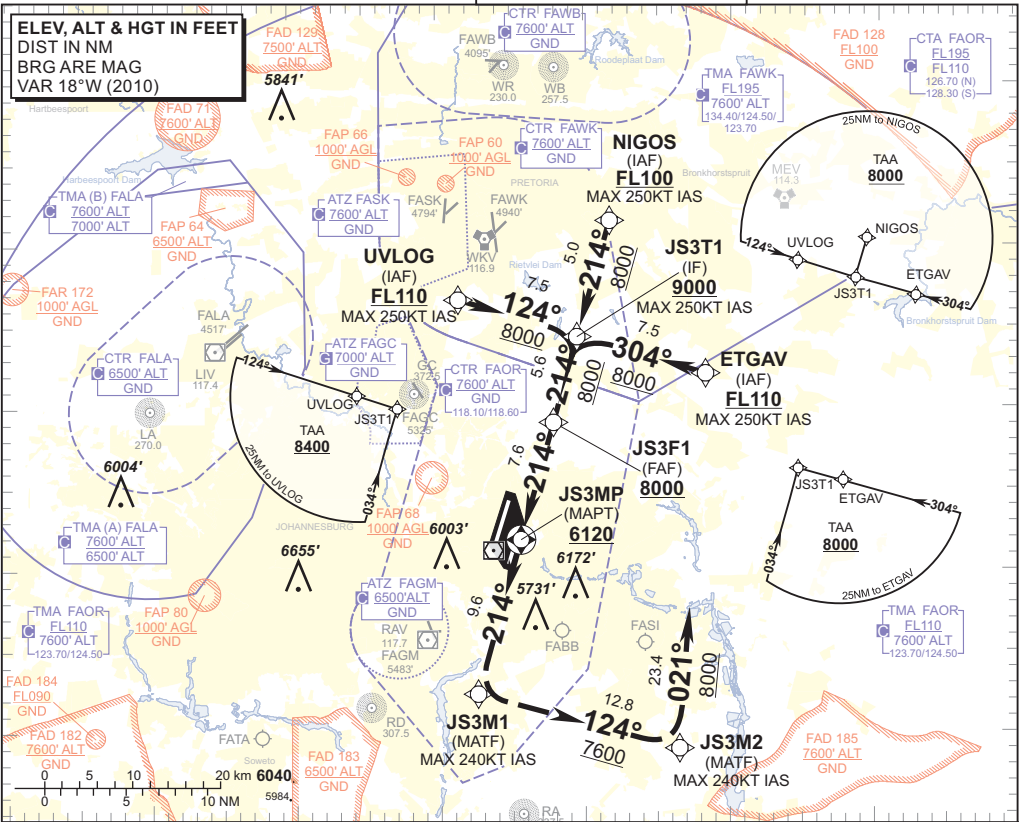


INSTRUMENT APPROACH CHART **AERODROME ELEV 5558'**
 HEIGHTS RELATED TO **THR RWY 21L - ELEV 5494'**

RADAR APP S 124.50 ATIS 126.20
 E 124.50 115.20
 W 123.70 SMC 121.90
 TWR E 118.80
 W 118.10

JOHANNESBURG
 (O.R. TAMBO INTERNATIONAL)
RNAV (GNSS) RWY 21L
 CAT A - D

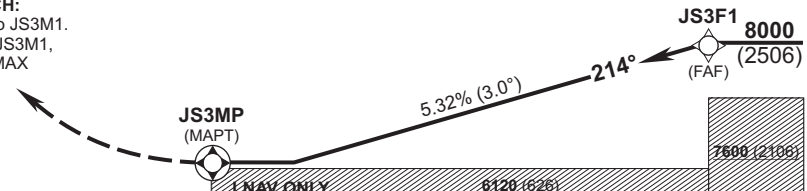
ELEV, ALT & HGT IN FEET
DIST IN NM
BRG ARE MAG
VAR 18°W (2010)



DIST (NM) to JS3MP	6	5	4	3	2		
ADVISORY ALT (HGT)	7490 (1996)	7160 (1666)	6840 (1346)	6520 (1026)	6200 (706)		

TRANSITION ALT 8000
TRANSITION LEVEL ATC

MISSED APPROACH:
 Climb to 8000 ALT to JS3M1.
 From JS3MP route JS3M1,
 JS3M2 to ETGAV (MAX
 240KT IAS) or as
 directed by ATC.



THR ELEV 5494

NM to/from THR RWY 21L

		A	B	C	D	GS	KT	80	100	120	140	160
Straight-in Approach	With 3.5% Missed APCH Gradient	6120 (626)	6120 (626)	6120 (626)	6120 (626)	JS3F1 to JS3MP	M:S	5:42	4:34	3:48	3:16	2:51
	With 2.5% Missed APCH Gradient	6530 (1036)	6530 (1036)	6530 (1036)	6530 (1036)	Rate of descent	FPM	431	538	646	754	861
	RVR	900m	1000m	1000m	1400m	GS	KT	120	140	160	180	200
Circling	ALS OUT	1500m	1500m	1800m	2000m	3.5% Missed APCH Climb Gradient	FPM	425	496	567	638	709
	WEST OF RWY 03/21	6070 (512)		6410 (852)		NOTE: 1. Minimum 3.5% Missed Approach Climb Gradient required to cross the CTR BDY at 7600 ALT or above. 2. MAX 240KT IAS on Missed Approach.						
EAST OF RWY 03/21	6050 (492)		6250 (692)									

CHANGE: WARNING BLOCK REMOVED

EFF: 31 DEC 20